

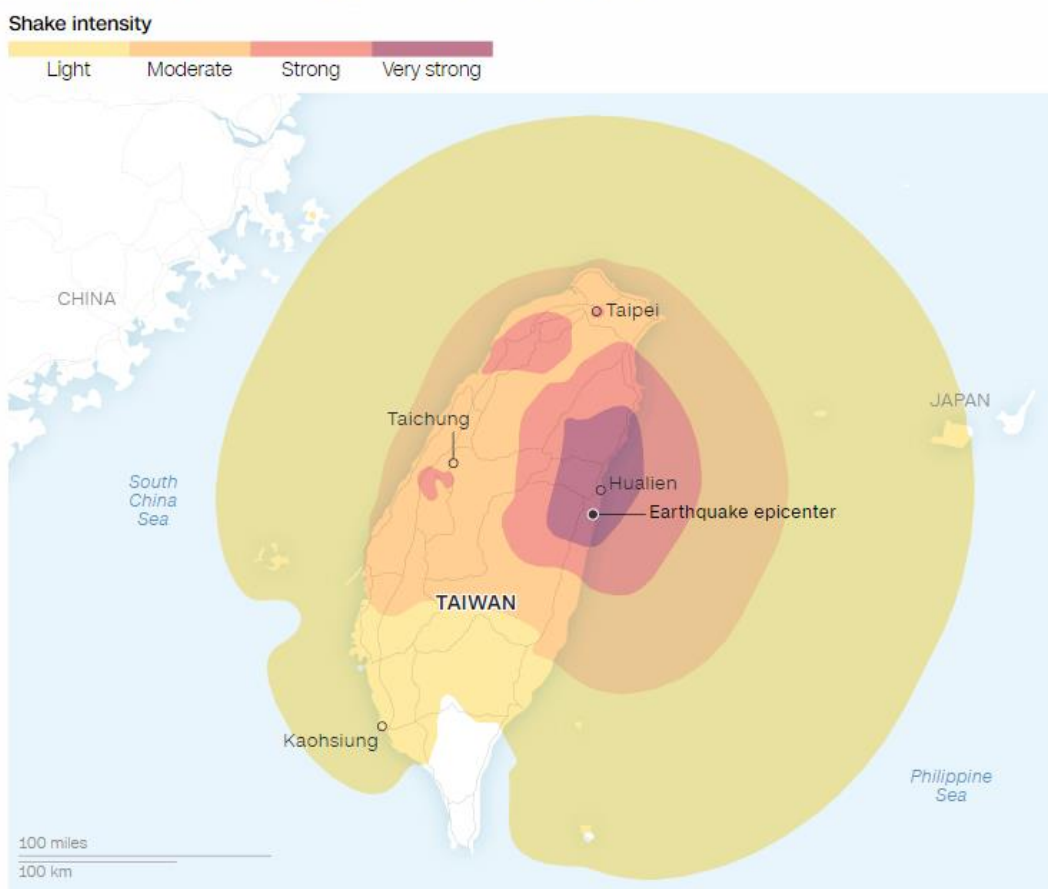
## Earthquake in Taiwan

*Jieun Kim Han, Regional Liaison for East Asia*

A 7.2-magnitude earthquake struck off the east coast of Taiwan on Wednesday morning, April 3, 2024. Taiwan's biggest earthquake in at least 25 years killed nine people and injured more than 1000, while 50 workers travelling in minibuses to a hotel in a national park were missing. More than 200 aftershocks were recorded, weather officials said.

The earthquake hit about 15 miles south of Hualien County just before 8 a.m. local time. According to the Central Weather Administration (CWA), the epicenter was 25km south-southeast of Hualien County Hall at a depth of 15.5km.

The earthquake hit Hualien County at 7:58 a.m. local time on Wednesday.



Data as of April 3, 2024 at 6 a.m. ET

Source: United States Geological Survey  
Graphic: Lou Robinson, CNN

Hualien County, parts of which are mountainous and remote, is home to about 300,000 people on the island's sparsely populated east coast. Taiwan recorded 76 aftershocks in less than five hours, according to the Central Weather Administration. Wednesday's quake is the strongest to hit Taiwan since 1999, according to the Central Weather

Administration. That year, a 7.7 magnitude quake hit south of Taipei, killing 2,400 people and injuring 10,000 others.

Some buildings tilted at precarious angles in the mountainous, sparsely populated county of Hualien triggered massive landslides. Overnight, at least 143 people remained trapped under rubble, authorities said. Some 70 workers who were stranded at two rock quarries were safe, according to Taiwan's national fire agency, but the roads to reach them were damaged by falling rocks. Six workers were going to be airlifted on Thursday.

Taiwan's outgoing President Tsai Ing-wen said Wednesday she had ordered her administration to "immediately" get "on top of the situation and understand local impacts as soon as possible."

Tsai also told the administration to "provide necessary assistance and work together with local governments to minimize the impact of the disaster."

Taiwan, a self-ruled island east of mainland China, is home to about 23 million people, most of whom live in the industrialized cities of its west coast, including the capital.

The island is regularly rocked by earthquakes due to its location on the Pacific Ring of Fire, which runs around the edge of the Pacific Ocean and causes massive seismic and volcanic activity from Indonesia to Chile.

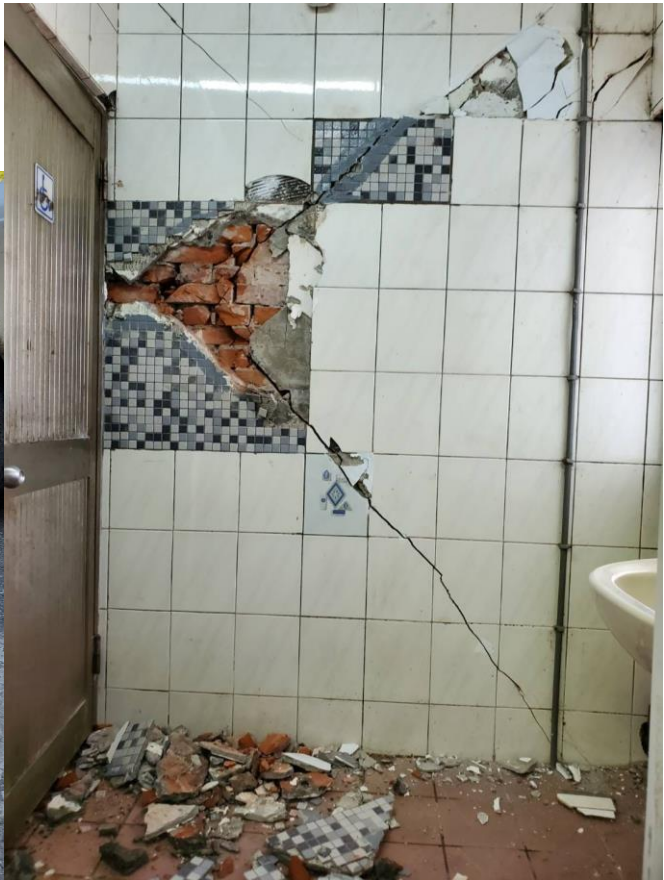


(Photo from *Tai Pei Times*)

## Yusan Seminary (玉山神學院)

The Yushan Theological Seminary, belonging to one of PCUSA's partner churches - the Presbyterian Church in Taiwan (PCT) - was also damaged. These are photos from the Yushan Seminary, the Presbyterian Seminary on the East Coast. That area was hit the hardest. (Photos from the Facebook Page for Yusan Seminary)





## **Mission Co-Workers in Taiwan**

Gratefully, all three MCWs, Rev. John McCall, Rev. Dr. Jonathan and Emily Seitz, based in Taiwan are safe and doing well. I share correspondence/communication with our colleagues.

### **John McCall**

“Thanks for your concern. I was on the 16th floor of a Presbyterian hospital just getting ready to start my physical when the building started to sway and shake. It was quite violent with pictures falling off the walls and huge potted plants falling and breaking. Even the sofa I was sitting on slid across the floor. But Taipei fared well. I am most concerned about my friends and those who live on the East Coast and those who are caught in the national park on the East Coast. Please pray for the rescue operations.”

“Thank you for your ongoing prayers for Taiwan. Yesterday and today, I was able to reach most of my former students who are serving in churches in Hualien, where the damage has been most intense. All of them, their families, and their church members are doing fine. One of the pastors is serving a church closest to the epicenter, and their church building is fairly new, so withstood the shaking. There has been limited damage to church structures as far as I know, except for what Jonathan mentioned about cracks in the old education building at Yu Shan Seminary. I talked with one of the teachers there today, and she has been at a conference on the West Coast but will return tomorrow and will let me know of any other needs.

They are still trying to get people out of Toroko Gorge, which is one of the national parks. The roads have had many landslides and are impassable. But they were able to get the train to the East Coast started at 7 AM this morning which is amazing. I also checked with the moderator of Taroko Presbytery, one of our indigenous presbyteries which has many churches near the epicenter, and they are all doing ok.

As Jonathan says, considering the size of this earthquake, it is amazing that there were not more casualties.

I plan to be at the PCT General Assembly office on Monday and will let you know from their end if there are other needs.”

### **Jonathan Seitz**

“Thank you for checking in on us! I haven't heard from John, but things in Taipei seem pretty normal. It was a lot of shaking but could have been much worse. I posted some photos on FB of our sister seminary on the east coast, which looks like it took some damage. We're grateful for prayer and if there's anything we can do to share about it, just let us know.”

## **Chiang Chi Kang (Ecumenical Offer of the PCT)**

“Dear Jieun, thanks for your warm and kind cares for the earthquake that happened in Taiwan yesterday, I will keep updated with the development of aftermath.”

## **Mr. Lim Su-Hong**

My friend from Presbyterian Church in Taiwan (PCT), Executive Committee Member of CCA General Assembly sends messages below:

“Thank you, Rev. Jieun, for caring. The epicenter is in Hualien, Eastern-Taiwan side, where the disaster is more serious, and aftershocks still continuing. I currently know the buildings at PCT Yushan Theological Seminary were damaged, if there is any follow-up news I will share with you. Thanks for your prayer!

Here is updated information by PCT Ministry of Church and Society Committee, only in Mandarin Chinese, you could use website translate function to read first, but the text maybe not all correct. So, I will try to ask PCT office for English version.”

The latest relevant news (including rescue work, etc.) can be found on Facebook:  
<https://www.facebook.com/pctsociety>

## **PCT Ministry of Church and Society Committee**

The Ministry of Church and Society Committee of PCT has been working hard to update the Hualien earthquake news to their churches and constituents.

They provide Rescue news under the leadership of Rev. Lin Weilian (林偉聯), the general church officer, as he arrived in Hualien on April 4 and met with the local pastors to survey and understand the needs of disaster areas. Various volunteer groups such as Hope Volunteer Group, Taiwan Heart Volunteer Group, water and electricity volunteers, and Tai Po American Church Disaster Prevention Volunteers are waiting for the direction.

The Committee provides space for application for condolence contributions for casualties of believers and the reconstruction or construction subsidy project for the chapel and the house.

Donation information:

Postal transfer: Presbyterian Church in Taiwan Mission Foundation/19566285/ Remarks 0403 Hualien Earthquake

Online donation: <https://donate.pct.org.tw/Storeservice.aspx?SSID=D2019081901>

Please note the 0403 Hualien Earthquake

**Final Remarks:**

This is a brief report about the recent earthquake in Taiwan. Hope this is informational and helpful. Let us continue to pray for victims and the injured of the Taiwan earthquake and their families. May they rebuild their lives from the rubble. We also pray for the health and well-being of rescue workers who continue to search for survivors. Thank you.