



Presbyterian Church (U.S.A.)
Presbyterian Mission

2017

Presbyterian Mission Agency
Annual Report





Desiree Lawson of Trinity Presbyterian Church in Flint, Michigan, hugs Gail Farnham of the Presbyterian Disaster Response Team. (Photo by Mike Fitzer)

CONTENTS

About the Presbyterian Mission Agency	5
Message from David Crittenden & Ken Godshall	6
2017 in Review	8
The Work of the Presbyterian Mission Agency	10
Poverty	12
Racism	14
Disaster Response	16
Education	18
Human Trafficking.....	20
Immigration	21
Refugee Crisis	22
Food Justice	24
Peace & Reconciliation	25
Young Adult Volunteers	26
New Worshiping Communities	28
Mission Engagement & Support	30
Presbyterian Mission Agency Organizational Chart	32
Presbyterian Mission Agency Board Members	33
Presbyterian Church (U.S.A.) Organizational Chart	34
Agencies of the General Assembly.....	35
Financial Information	36

ON THE COVER:

In Louisville, horticulturist Stephen Lewis helps children of a new-immigrant family learn to garden. (Photo by Andrew Kang Bartlett)



4

After a gathering of World Mission co-workers in Rwanda, a group from the PC(USA) visited Gaseke Presbyterian Church, where some members make and sell crafts. (Photo by Kathy Francis)



ABOUT THE PRESBYTERIAN MISSION AGENCY

For we are God's handiwork, created in Christ Jesus to do good works, which God prepared in advance for us to do. — Eph. 2:10 (NIV)

Ephesians says that God made us to do good works and planned what we would spend our lives doing. However, we weren't meant to do that work alone — working together was God's idea.

For more than 200 years, Presbyterians have been responding to the call of Jesus Christ together. Through relationships and covenants with mid councils, international partners and congregations, they continue to live out their faith, calling on others to do justice, love kindness and walk humbly with them in the glory of God.

Though we have always been a connectional denomination, this past year the Presbyterian Mission Agency worked more closely and intentionally across ministries on issues that can make the world we live in a better place for future generations.

Issues like racism, immigration and human trafficking bring together justice-minded advocates across the denomination and the country to fight for human rights, justice and equality.

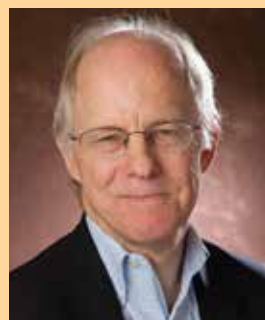
Together, we share the love of Christ by working to eradicate hunger and poverty by training peacemakers, educating children and growing church communities. By caring for those populations affected in times of disaster and crisis, we enable others to witness to the healing love of Christ.

This work is shared among four ministry areas that together help carry out our mission to inspire, equip and connect Presbyterians to serve Christ in the world: Compassion, Peace & Justice; Racial Ethnic & Women's Ministries; Theology, Formation & Evangelism; and World Mission.

Scripture is full of God's vision for community, for people to live and work together in God's mission and the transformation of the world. In the pages ahead, you will see that vision and mission come to life. You can learn more by visiting our website at presbyterianmission.org or by finding many of our mission areas on Facebook and Twitter.

We look forward to connecting with you as together we seek the Creator's living word in these times of turmoil and work together to be reflections of the eternal light that is Jesus Christ.

5



MESSAGE FROM DAVID CRITTENDEN & KEN GODSHALL

*Now faith is the assurance of things hoped for, the conviction
of things not seen. Indeed, by faith our ancestors received approval.
By faith we understand that the worlds were prepared by the word of God,
so that what is seen was made from things that are not visible.
— Hebrews 11:1–3*

The writer of Hebrews is not just defining what faith is, but is also showing what faith does. Faith is the foundation for what we hope, the foundation for our relationship with God and everything that it implies.

At the Presbyterian Mission Agency, we know what it is to operate on faith. It is the foundation for the work we do to build and sustain God's church. It is because of faith that even in the midst of political unrest, disasters and suffering near and far, we can still see the hope in a new worshiping community, the steps toward peace in war-torn countries and the light that shines through the eyes of a young adult as he or she yields to the call of God.

Because of our biblical understanding of who God is and what God intends for humanity, we also know that the church must stand against, speak against and work against racism. The year 2017 gave us opportunities to address racial injustice, through events like Big Tent, new antiracism resources — and a new website campaign, facingracism.org.

As we strive to live into this vision, we face many challenges in this profoundly individualistic society. Despite those challenges, we will continue creating and sustaining life-giving relationships and communities that connect us to God and to one another.

In Christ,

David Crittenden
Acting Executive Director
Presbyterian Mission Agency

Ken Godshall
Chair
Presbyterian Mission Agency Board



Artist Malissa Beatty devoted about three weeks to painting a large mural of Jesus washing the feet of his disciples, inspired by the local and international ministries of LaGrange Presbyterian Church in LaGrange, Kentucky. (Photo by Tammy Warren)



COMPASSION, PEACE & JUSTICE



Sara Lisherness, Director

Compassion, Peace & Justice (CPJ) works to address injustice; advocates for peace; and assists and accompanies communities impacted by poverty, violence and disasters. Working alongside other ministries, CPJ supports efforts to eradicate racism, white supremacy and oppression.

2017 included a successful CPJ Training Day in Washington, D.C., addressing racism, militarism and materialism. Changes in national immigration policy prompted increased advocacy and support for refugees and immigrants. Presbyterian Disaster Assistance responded to extraordinary natural and human caused disasters, including catastrophic hurricanes impacting Puerto Rico and Texas.

Advisory Committee on Social Witness Policy (ACSWP)
Environmental Ministries
Office of Faith-Based Investing & Corporate Engagement
Office of Public Witness
Presbyterian Disaster Assistance
Presbyterian Health, Education & Welfare Association
Presbyterian Hunger Program
Presbyterian Ministry at the United Nations
Presbyterian Peacemaking Program
Presbyterian Self-Development of People
Racial & Intercultural Justice (joint ministry with Racial Ethnic & Women's Ministries)

RACIAL ETHNIC & WOMEN'S MINISTRIES



Rhashell Hunter, Director

Racial Ethnic & Women's Ministries (RE&WM) works to end racism, empower women and build intercultural communities. Staff in RE&WM speak 9 languages, including English, Spanish, Korean, Chinese, Taiwanese, Mandarin, Arabic, Hausa and Igbo. Our new immigrant constituents represent 22 nationalities speaking 18 languages and dialects.

In 2017, RE&WM hosted an inaugural New Immigrant Clergywomen's Leadership Institute, an Intercultural Conversation, and joined with partners on G.A. referrals to lift up the heritage and history of Korean Americans in the church, take action to address the worsening plight of the African American male, share the Native American apology, and repudiate the Doctrine of Discovery.

African American Intercultural Congregational Support
African Intercultural Ministries
Asian Intercultural Congregational Support
Gender & Racial Justice
Hispanic/Latino-a Intercultural Congregational Support
Korean Intercultural Congregational Support
Middle Eastern Intercultural Ministries
Mission Program Grants
Native American Intercultural Congregational Support
Racial Ethnic Leadership Development & Recruitment
Racial Ethnic Schools & Colleges
Racial & Intercultural Justice (joint ministry with Compassion, Peace & Justice)
Women's Leadership Development & Young Women's Ministries
In covenant relationship with Presbyterian Women in the Presbyterian Church (U.S.A.), Inc.

THEOLOGY, FORMATION & EVANGELISM



Ray Jones, Interim Director

During 2017, the Theology, Formation & Evangelism ministry area strengthened its connections with presbyteries and local churches. More Presbyterian congregations are now integrating the Confession of Belhar into their worship and study, as well as embracing the revised *Book of Common Worship*. With these important tools, Presbyterians have been inspired to join in theological conversations that impact their faith and let them help transform the church and the world. The 1001 New Worshiping Communities movement has continued to thrive and expand, and a new Vital Congregations initiative was launched. Our work in Christian Formation is helping Presbyterians grow in their faith and spiritual practices.

1001 New Worshiping Communities
Camps & Conference Centers
Christian Formation
Collegiate Ministries
Committee on Theological Education (COTE)
Company of New Pastors
Financial Aid for Service
Interfaith Relations
Ministries with Youth
Theological Conversations
Vital Congregations
Worship

WORLD MISSION



Jose Luis Casal, Director

From the neighborhood to the world, our joint mission of cross-cultural service is always changing, growing and evolving. In 2017, we continued to work together with U.S. congregations and global mission partners bound by our fundamental unity in our Lord, Jesus Christ. Today the practice of partnership guides our connectional church. We believe that doing mission in partnership broadens our awareness of how interconnected God's mission is at the local, national and global levels. The one table around which we gather is God's table, and the one mission to which we are called is God's mission. We will continue to nurture those partnerships in ways that will result in maximum collective impact.

Area Office for Africa
Area Office for Asia-Pacific
Area Office for Europe & the Middle East
Area Office for Latin America & the Caribbean
Equipping for Mission Involvement
Global Mission Partnerships
Jinishian Memorial Program
Mission Personnel
Mission Service Recruitment
Young Adult Volunteers



THE WORK OF THE PRESBYTERIAN MISSION AGENCY

On the pages that follow, we highlight and celebrate the impact of the connectional work that the Presbyterian Mission Agency has accomplished — together with mid councils, international partners, congregations and others. We are proud of the achievements of our four ministry areas — Compassion, Peace & Justice; Racial Ethnic & Women's Ministries; Theology, Formation & Evangelism; and World Mission — and how they often collaborate to be Christ's hands and feet in today's world.

To learn more, please visit us at presbyterianmission.org.



A family in a Liberian village. (Photo by Rick Jones)

12



Children in a Liberian village eat lunch. (Photo by Rick Jones)

Farmers in West Africa are proud of their new crops, made possible through the West Africa Initiative. (Photo by Valery Nodem)



COMBATING A GLOBAL CRISIS

According to the U.S. Census Bureau, more than 43 million people in this country live in poverty, while the World Bank estimates that more than 700 million people worldwide — 9.6 percent of the population of the earth — are poverty-stricken. Addressing poverty and its root causes has been a core of every ministry within Compassion, Peace & Justice — from advocating for change on Capitol Hill or in the United Nations, to supporting small business owners seeking to provide for their families and local communities.

The Presbyterian Hunger Program, among its many domestic and international initiatives, supports programs like “Send a Cow,” which improves food security, livelihoods and income-generating potential for more than 420 farmers and their families — 2,000 people in all. Presbyterian Disaster Assistance has also continued work to help restore communities and regions facing severe poverty due to disasters such as hurricanes in Puerto Rico and Haiti.

FROM TINY MUSTARD SEEDS

World Mission’s ecumenical partner for Iraq, Syria and Lebanon proudly reported that students at Amjad High School in Beirut came up with a plan and joined with BLESSED (Benevolent Lebanese Evangelical School for Special Education and Development), a school for children with disabilities also in Beirut, to prepare and deliver nearly 2,000 nutritious meals to neighbors in need — all paid for by the students themselves. BLESSED works with PC(USA) partners in Iraq to help train teachers in special education.



Students at Amjad High School in Beirut. (Photo by Scott Parker)

HELPING PEOPLE HELP THEMSELVES

Community Health Evangelism (CHE) programs in Africa, Asia and Latin America are helping communities and individuals take control of their own lives and destiny. World Mission’s partnership model is spiritually based and is predicated on community ownership. CHE represents a major shift from a deep-seated expectation in missionary work that others will do for you; it’s a shift in seeing that those who have “received” have something to give and offer themselves. It’s also a shift in seeing the many resources available locally and a shift in understanding that individuals and communities can facilitate change within their own communities. Typically, CHE is a slow process, but progress is being made. In Malawi, a CHE program begun in 2014 in eight villages made strides in 2017 to combat recurring food shortages and hunger by creative farming and siloing.



Mission co-worker Michael Ludwig (right) works with communities to identify their needs and resources before discussing solutions. (Photo by Rachel Ludwig)

13



PC(USA) COMMUNICATION GROUPS INSPIRE CONVERSATION AND ACTION WITHIN LOCAL COMMUNITIES

Acting on the directive of the 222nd General Assembly (2016), the communication offices of the PC(USA)'s six agencies launched the joint "Facing Racism" campaign to produce and promote antiracism resources for the church. The Presbyterian Mission Agency built and administered a successful new website, facingracism.org. We worked with other agencies and related Presbyterian entities to create a recurring electronic campaign to disseminate information on antiracism resources, statements, study guides and training materials to mid councils, congregations and Presbyterian-affiliated organizations. The bimonthly email program generated strong interest and engagement.



Self-Development of People (SDOP) Coordinator, Alonzo Johnson (left), moderates a panel discussion called "Diverse Voices: Confronting Chaos, Forging Community" with panelists Stephanie Quintana-Martinez, Elona Street-Stewart and Amal Nassar. (Photo by Ray Chen)

IN 2017 PC(USA) WAS VOCAL AND VISIBLE IN ITS MESSAGE OF EQUALITY AND FAIRNESS

In April, African American clergy gathered in Washington, D.C., to discuss the political, racial and ethnic climate in America. Then in July, nearly 300 Presbyterians met in St. Louis and began "Holy Conversations around Race" with visits to five area congregations that have experienced racism. Reflecting on a racially charged shooting in the community, the Rev. Mike Trautman, pastor of First Presbyterian Church in Ferguson, Missouri, observed, "Ferguson looks good on the outside, but in many ways, the aftermath of the Michael Brown shooting continues to haunt people as we look for ways to come back together again." And in August, Presbyterian pastor Ken Henry joined with other

BIG TENT 2017 HOLDS WORKSHOPS AIMED AT DISMANTLING RACISM

In July, the Racial Ethnic & Women's Ministries sponsored a workshop at Big Tent 2017 in St. Louis, "Disrupting Racism: Building the Intercultural Community," packed in 50 percent more attendees than had registered. The session helped participants recognize systems of power and privilege that perpetuate racism and equipped them to better understand the thinking and behaviors that lead to systemic and structural racism. The workshops also encouraged attendees to gain insights into their personal biases — not to shame people or make them feel guilty, but to make them aware of their biases and help them make changes to be more like Jesus.



Clergy link arms to provide a barricade during a counter-demonstration as white supremacist groups march in Charlottesville, Virginia. (Photo by Heather Wilson)

faith leaders in Charlottesville, Virginia, to counter a white supremacist march. He commented, "The inspiration was for congregations to come together at a time when fear is rampant in our cities. I was surprised by the good response."

CREATING AN ENVIRONMENT FOR WOMEN OF COLOR TO THRIVE

Presbyterian women from across the U.S. gathered in celebration at the 2017 Women of Color Consultation, an annual event that strives to include and value the voices and experiences of women of color of all ages in leadership and decision-making roles in presbyteries and synods. This is just one way that Racial Ethnic & Women's Ministries (RE&WM) supports and partners with women of color through leadership development opportunities, recruitment and networking, cultural humility trainings in the church, and women's listening

visits. Institutional racism, sexism and gender identity discrimination are obstacles for women of color ministers, elders and leaders in the PC(USA). RE&WM's goal is to create an environment and opportunities where women of color thrive and can serve fully in ministry.



Presbyterian women celebrate together at the 2017 Women of Color Consultation. (Photo by Heather Wilson)



DISASTER RESPONSE

Hurricane Irma hits Havana, Cuba. (Photo by ACT Alliance)



The aftermath of Hurricane Irma in Havana, Cuba. (Photo by ACT Alliance)



Damage left by Hurricane Harvey in Texas. (Photo by Rick Jones)



A VERY BUSY YEAR FOR PRESBYTERIAN DISASTER ASSISTANCE (PDA)

In 2017, PDA responded to disasters in 22 countries outside the U.S. — plus, at home, a plethora of hurricanes, floods, tornadoes, wildfires, storms, human-caused disasters and refugee crises. All told, PDA made grants totaling \$4.2 million, and 7,136 PDA blue-shirt volunteers gave more than 200,000 hours of volunteer labor valued at more than \$4.8 million. On multiple occasions in 2017, PDA also deployed its National Response Team — first responders in the field following a disaster — who provided support to presbyteries and synods as they assessed the impact of the disaster on both the church and community and who assisted in connecting mid councils to recovery resources.

The hurricane season wreaked havoc on Florida, Texas, Puerto Rico and the Caribbean, as Harvey, Irma and Maria left hundreds dead and millions of dollars in damage. Recovery is expected to take years. PDA responded with shelter kits, food, hygiene kits, water purification systems and more.

While the storms raged, Mexico faced an earthquake, registering 7.1 on the Richter scale, causing buildings and houses to collapse and trapping or killing hundreds. PDA provided emergency food assistance, distributed clothes and medical supplies, and provided other support.

Wildfires in Montana and Southern California destroyed homes, ranches and businesses, leaving hundreds without a place to live. PDA helped coordinate temporary shelter and emergency supplies to meet basic needs.

Gun violence continued to create a path of destruction. A lone gunman killed more than 60 and wounded 500 in a mass shooting in Las Vegas. PDA assisted with psychosocial support services.

PDA also helped in the rehabilitation of two schools in Syria, rebuilt almost 30 homes of displaced Syrian families, and aided nearly 200 Syrian children residing in refugee camps with literacy education, meals, uniforms, winter clothes and medicine.

In Bangladesh, PDA helped nearly 40,000 displaced Rohingya people with emergency food assistance



A Rohingya refugee camp in Cox's Bazaar in Bangladesh. (Photo by Raisa Chowdhury, ACT Alliance/ICCO)



TIRELESS ADVOCATES FOR YOUNG PEOPLE

Although many children grow up in an atmosphere of violence, poverty and other negative influences, the “Educate a Child, Transform the World” initiative is working to counter that reality. The 221st General Assembly (2014) called on Presbyterians in the U.S. and abroad to improve the quality of education for 1 million children by 2020 through this initiative. In the Presbyterian Mission Agency, the Presbyterian Committee on the Self-Development of People and World Mission ministries both focus on education as a way to transform lives.



18

OPENING DOORS TO ABUNDANT LIFE THROUGH EDUCATION

Working with partner churches and organizations in many countries, Presbyterian World Mission has found creative ways to make education attainable and help people reach their full potential. Today in Malawi, about 35,000 children attend 500 care centers, thanks to World Mission’s work with the Livingstonia Synod of the Church of Central Africa Presbyterian (CCAP). In Ethiopia, World Mission’s partnership with the Ethiopian Evangelical Church Mekane Yesus resulted in 32 young women engaging in theological studies. In Zambia, World Mission’s work with the CCAP’s Zambia Synod led to building 30 community schools throughout the region primarily to bring education to orphaned and vulnerable school-age children.

Children are taught at the Embangweni School for Deaf Children in Malawi. (Photo by Jesse Dimmock)



FORGIVING STUDENT LOANS

The Transformational Leadership Debt Assistance program of our Financial Aid for Service office is reducing financial barriers to service for pastors serving small congregations and new worshiping communities. Offering 50 \$5,000 loans a year to eligible pastors, the program also provides church members and pastors with advice on managing educational debt. Upon completion of 18 months of service, the loan is forgiven. Participants reapply to receive up to a total of \$15,000 of loan forgiveness. Through 2017, the program has repaid \$600,000 on behalf of pastors.

An Austin College student studies. (Photo by Robyn Davis Sekula)



19



ADDRESSING FORCED MIGRATION AND HUMAN TRAFFICKING

Cathy Chang and Juan Lopez are mission co-workers living in the Philippines. Chang serves as regional facilitator for addressing forced migration and human trafficking. The U.N.'s International Labor Organization estimates that 21 million people are victims of coerced labor or forced sexual exploitation. While human trafficking is a worldwide problem, countries in Asia are among the most vulnerable. Chang and Lopez work with Asian churches and non-governmental organizations to help coordinate efforts related to forced migration and human trafficking, resourcing various ministries and programs of the Presbyterian Church (U.S.A.).



Mission co-worker Cathy Chang learns dance moves from children who live in tea plantation housing in Sri Lanka. Tea plantations in Sri Lanka are one of Asia's marginalized communities vulnerable to human trafficking. (Photo by Kathy Melvin)

MISSION AGENCY EDUCATING, ADVOCATING AND EMPOWERING PRESBYTERIANS TO ACT AGAINST HUMAN TRAFFICKING

Harboring and recruiting people for forced slave labor has reached epic proportions. In 2017, the Presbyterian Mission Agency took the lead on many fronts to confront this evil. The Presbyterian Peacemaking Program hosted an educational travel study seminar to Madagascar to hear firsthand from faith leaders who have worked for the release of trafficked Malagasy women from Middle Eastern nations. The Presbyterian Ministry at the United Nations annually promotes the Red Hand Campaign aimed at stopping the practice of recruiting children as soldiers. UNICEF estimates that more than 300,000 children under the age of 18 are currently involved in armed conflict. The Presbyterian Hunger Program once again joined the Coalition of Immokalee Workers at the Wendy's restaurant headquarters urging leaders to join the Fair Food

Program and address the rights of farmworkers who pick vegetables for the company. For years, workers have faced physical and sexual abuse, as well as forced labor practices.

Participants in the Red Hand Campaign. (Photo by Ricky Velez-Negron)



A crowd of 500 people at First Presbyterian Church in Metuchen, New Jersey, protest the arrests of immigrant Christians for possible deportation. (Photo by Justin Karmann)

STRONGER IMMIGRATION AGENDA IN 2017

Presbyterians stepped up their efforts in 2017 by partnering with interfaith colleagues and nonprofit organizations to assist immigrant communities for both new and long-term residents. The year 2017 and a new administration had barely begun when an executive order was issued to curb immigration to the U.S. The Office of Public Witness joined other faith leaders in denouncing the action. Presbyterian Disaster Assistance supported local initiatives through consultation, grantmaking and the deployment of National Response Teams. This included help for people held in immigrant detention centers in Texas and Arizona, as well as legal support for immigrants in Detroit and a New Hampshire congregation in which Indonesian immigrants faced orders of deportation. Church leaders estimate that as many as 800 PC(USA) congregations supported or volunteered with refugees and immigrants in the U.S.



Louisville Presbyterian Theological Seminary participates in an immigration rally with PC(USA) on the "We Choose Welcome" campaign. (Photo by Mark Koenig)



A migration-themed mural outside the city hall of Soyapango, El Salvador. (Photo by Tracey King-Ortega)

ADVOCATING FOR 'DREAMERS'

Many hoped for a positive outcome for "Dreamers" and better overall policies for just immigration, but the dialogue around immigration issues nationally remained at a critical juncture at the end of 2017. Several PC(USA) ministries worked tirelessly to shift the narrative around immigration from a legal to a human one, as global partners urged Presbyterians to be mindful that decisions made in the U.S. have ripple effects around the world. In 2017 the administration announced its decision to end the Deferred Action for Childhood Arrivals program (DACA), which could impact more than 690,000, deporting them to countries where they have no cultural connection, no homes, no jobs and no way of supporting themselves in already difficult economies. The Presbyterian Mission Agency has continued its advocacy efforts.



In recent years the number of people in the world experiencing forced displacement has been at its highest since World War II. Many PC(USA) congregations are welcoming them in Christ's name. (Photo by Paul Jeffrey, ACT Alliance)

22

OFFERING REFUGE IN THE U.S.

In the past two years, more than 1,500 PC(USA) congregations have provided support for refugees seeking a new life in the U.S. Congregations in 35 states and Washington, D.C., are engaged in refugee ministry. In 2017, Presbyterian Disaster Assistance unveiled its newest documentary, *To Breathe Free*, an inspirational film that follows a Syrian family's journey and settlement in the U.S. through the help of their host church. The film continues to draw interest from churches and communities across the country, prompting many to inquire about starting their own refugee ministry.

MISSION CO-WORKER WORKS WITH REFUGEES IN BERLIN

Presbyterian World Mission co-worker Alethia White tells the story of Noor, who arrived in Germany with two young children and without her husband. She left her home in Aleppo, Syria, two years earlier. Conditions made it impossible to live there any longer. During her passage across the Mediterranean Sea, the boat she was on sank with her young children and a group of other migrants. Noor, a trained swimmer, fortunately was strong enough to stay afloat and keep her children safe until they were rescued. When she arrived in Berlin, Noor didn't speak German and felt alone and uncertain. But with determination, she learned the language and today is fluent. A nurse in Syria, Noor hopes to someday continue her work in Germany.

White encourages individuals and congregations to listen to refugee stories like Noor's. She urges us to learn from them, feel the human connection and then follow Jesus' prompting and show our love for one another.

“Over 65 million people are displaced by war and persecution, and 30 million of them are children,” said the Rev. Jimmie Hawkins, director of the Office of Public Witness. “Our nation has historically stood for hope for those fleeing war and persecution. We cannot turn our backs on them now.”

23



Zahra Al Hussein feeds her children inside her tent in a settlement of Syrian refugees in Minyara. (Photo by Paul Jeffrey, ACT Alliance)



Pickets go up at Wendy's headquarters in Columbus, Ohio. (Photo by Andrew Kang Bartlett)



Soul Fire Farm in upstate New York is committed to ending racism and injustice in the food system. (Photo by Andrew Kang Bartlett)



FOOD WEEK OF ACTION RAISES AWARENESS ON FOOD SOVEREIGNTY AND JUSTICE

With resources from the Presbyterian Hunger Program (PHP) and interfaith partners, congregations celebrated 2017 World Food Day and Food Week of Action with special meals served to community residents who wrestle with poverty and hunger, or campaigns to promote community gardens, food pantries or other food-justice issues. According to Andrew Kang Bartlett, associate for national hunger concerns in the PHP, the world produces enough food to feed everyone on the planet but because of the way we design our food system and the politics around it, a lot of people in the world are chronically hungry. "Our goal is to shift the way we feed people to be more sustainable and equitable."

PRESBYTERIANS MAKE GREAT STRIDES IN FOOD JUSTICE

In the summer of 2017, the Presbyterian Hunger Program (PHP) launched an initiative called Hunger Action Congregations. By the end of the year, more than 70 Presbyterian churches received the designation for their efforts to address the root causes of hunger in their communities.

In preparation for a new farm bill, PHP, along with farmers and food justice advocates, began work on the "Eater's Guide to the Farm Bill" to address the impact on the food people eat, hunger, poverty and the farm system.

The West Africa Initiative, a joint effort of PHP, Presbyterian Disaster Assistance and Self-Development of People, continues to provide villages in Sierra Leone and Liberia with the opportunities to forge their own path in food production and sustainability.

Ralph Jones is a Native American who has fished in the Columbia River between Oregon and Washington State for more than 50 years and says the fish are smaller and not as plentiful as they were when he started in 1964. Jones shows his prize catch of salmon for the day in Cascade, Oregon. (Photo by Rick Jones)



SEEKING PEACE AND REUNIFICATION IN KOREA

A Presbyterian Church (U.S.A.) peace delegation traveled to South Korea in November in response to an overture and committee referral adopted at the 222nd General Assembly (2016) in Portland, focusing on the reunification of the Korean Peninsula and the need to build upon the increasing momentum toward peace. The delegation's itinerary included a visit to No Gun Ri Peace Park and a formal presentation by PC(USA) Stated Clerk J. Herbert Nelson, II, about the denomination's desire for the U.S. to acknowledge its responsibility in the deaths of the Korean civilians at No Gun Ri.

EFFORTS TO END GENOCIDE IN RWANDA

1994 Rwanda saw more than 880,000 of its citizens killed in a nationwide genocide. PC(USA) mission co-workers and our global partner in the Presbyterian Church of Rwanda are working together to continue the process of bringing peace and reconciliation to the country. Moving toward a future of peace, the next generation of compassionate theological leaders is training at the Presbyterian University of Rwanda in Kigali. One of its teachers, mission co-worker Kay Day, not only teaches theology but tries to be an example to students, both in and out of the classroom.



Sarah Logemann holds a workshop on gun violence introducing UKirk Ministries' new curriculum for campus ministries. (Photo courtesy of UKirk)

Members of a PC(USA) peace delegation visit No Gun Ri. (Photo by Kathy Melvin)



PC(USA) mission co-worker Kay Day teaches homiletics and biblical interpretation. (Photo by Kathy Melvin)



UKIRK COLLEGIATE MINISTRIES LAUNCHES GUN VIOLENCE CURRICULUM

Sarah Logemann, a student at Princeton Theological Seminary and intern at the Presbyterian Mission Agency, grew up in Littleton, Colorado, the site of one of the nation's deadliest school shootings. She developed a four-session study addressing the theological issues related to gun violence and outlining how campus ministries might respond in the event of tragedy.



26

“God is with us wherever
we are, wherever we go.
To bear witness to God
changing and transforming
lives, in big and small ways,
to share it with others
is gratifying.”

— Kristen Young, 2016–17 YAV

(Photos by Kristen Young)

YAVS MAKE A DIFFERENCE IN PERU AT SHELTER FOR SURVIVORS OF ABUSE AND VIOLENCE

As a Young Adult Volunteer (YAV) in Huánuco, Peru — at a shelter for young survivors of sexual abuse and domestic violence — Kristen Young experienced God’s healing presence. Young’s responsibility was to promote the shelter, Casa del Buen Trato Hovde, so she took lots of pictures. One day, 14-year-old Teresa*

pointed at Young’s camera, saying “tu tesoro (your treasure).” Young explained that it wasn’t the camera, but people and their moments of joy, hope and love that she treasured: Yormiña* in a birthday dress, Diana* holding her newborn son, Aida* in all of the places she wanted to remember when she found out she would be leaving the shelter. Seeing them alive, in spite of their suffering, had a profound impact on Young.

(*Not their real names)



VOLUNTEERS BUILD COMMUNITY AS THEY WORK FOR CHANGE

In Asheville, North Carolina, YAVs are helping to address the challenges of homelessness and poverty in this tourist mecca and growing city. The year 2017 marked Asheville’s second as an official YAV site, with four volunteers serving there during the 2016–17 program year. Jeremy Glidden worked with Homeward Bound, an organization that helps people move from homelessness to more stable living situations. He had a packed schedule in just his first six months of service: 65 move-ins, 87 donation pickups, nine moves of clients from one home to another and 37 furniture deliveries — but he loved the work, its challenges and the impact he made on people’s lives.

“Working with Homeward Bound, every day I constantly encounter different problems that I have no idea how to fix. Being in a situation where I have to figure it out on the spot — all that problem-solving — is preparing me to be adaptable.”

— Jeremy Glidden, 2016–17 YAV

Jeremy Glidden helps a Homeward Bound client move in.
(Photo by Gregg Brekke)



27



WOUNDED BY CHURCH, 1001 LEADER NOW MINISTERS IN A BAR

The Rev. Ken Fuquay, the son of a Pentecostal Holiness minister, was raised in that church. At 2 months old, his parents had him on the church platform. By 5 years old, they had him singing before the congregation. But from early on, he knew he was different when he found himself attracted to men — much to his father's reproach and warnings of eternal damnation. Fuquay, now happily partnered for 34 years and legally married for six, found a way to make a clean break from his childhood church thanks to a small Presbyterian church and the 1001 New Worshipping Communities movement. Fuquay and his husband, Terry, visited Seigle Avenue Presbyterian Church in Charlotte, North Carolina. There, people bear-hugged him and said, "We love you." Fuquay met other wounded people, and a group of them were inspired to form a new worshipping community called M2M — Matters to Mission. M2M now worships in a Charlotte bar along with a diverse group of people, including homeless and transgender people. Together they are learning to shed the damaging self-image that God doesn't find them good enough, and they are now valuing themselves as God's beloved.

RURAL VIRGINIA 1001 NEW WORSHIPPING COMMUNITY LAUNCHES 'FOOD TRUCK MONDAYS'



(Photo by Lisa Mears)

Gary Mears, lead missionary for The Porch at Faith Chapel in Lucketts, Virginia, hired a food truck to come out and park in the parking lot of his old church that closed two years ago. People began to come for food or to meet "the new guy." They stayed, made friends and turned their socializing into a vibrant hospitality ministry. Mears conducts Bible study

and continues to develop relationships with people in the community who have lived on family farms for generations. "People are gathering to explore what it means to be in relationship with one another and also in a relationship with Jesus Christ," says the Rev. Karen Chamis, director of congregational development and mission at National Capital Presbytery. "It's so exciting, I wish I could clone it."



Tim Bryant, left, leads a Bible study whose members are supportive of Hope for Life Chapel RV Ministry. He is with the Rev. Tamara John and Myron Hughes. (Photo by Jon Moore)

TRADITIONAL WORSHIPER NURTURED BY NEW WORSHIPPING COMMUNITY'S RV MINISTRY

Myron Hughes doesn't worship at the Hope for Life Chapel RV Ministry based in Huntington Beach, California, but supporting its transformative work has been a life-changing experience for him. "What I've learned from RV ministry," says Hughes, "is that the work of the church is on the street. It is in the workplace, at the park and on the beach. Churches in the future won't always be in a building, and that's OK." Hughes' enthusiasm about Hope for Life convinced members of his weekly men's Bible study to also support its work. The director of Hope for Life Chapel, the Rev. Tamara John, moved into the RV park six years ago to start the ministry. She builds relationships with its residents using her customized fifth wheel trailer with a chapel in the back as her ministry base. In the park, she encounters people from all walks of life: vacationers, oil rig workers, migrant workers, traveling nurses, unemployed people and others who are down on their luck. John observes, "For many reasons they are not going to go to a church, so I bring church, and the Gospel, to them."

The Rev. Ken Fuquay leads a 1001 New Worshipping Community in a Charlotte, North Carolina, bar named The Evening Muse. (Photo courtesy of M2M)





MISSION ENGAGEMENT & SUPPORT

BUILDING THE REALM OF GOD

The Presbyterian Mission Agency inspires, equips and connects Presbyterians to share the good news of Jesus Christ. We are grateful for the generous and faithful support of Presbyterian congregations and individuals for many years. Your gifts make it possible to connect Presbyterians with mission and ministry locally and globally.

We are always available to work with mid councils and congregations to provide resources, advice and guidance to more deeply engage you in Presbyterian mission in ways that are meaningful to you. The Mission Engagement and Support staff connects Presbyterians with opportunities to make a difference with their gifts around the world. These include Shared Mission Support, Special Offerings and designated giving, including sustained gifts through the Pillars of the Church initiative.



Contact your regional representative at presbyterianmission.org/mes-team.

Because we can do far more together than any of us could do individually, we invite you to join in praying, engaging and supporting Christ's mission through Presbyterian mission. Thank you for your support. Together, we make mission happen!

30



Second Presbyterian Church in St. Louis has been in a community garden partnership with a nearby school for seven years as part of its commitment to the environment. (Photo courtesy of Second Presbyterian Church)

ONE GREAT HOUR OF SHARING GIFTS ADDRESS GLOBAL HUNGER

Second Presbyterian Church in St. Louis, a certified Earth Care Congregation through the Presbyterian Hunger Program, is committed to environmental stewardship in worship, education, facilities and outreach. They work with Joining Hands Peru, another Hunger Program ministry, to help combat hunger, poverty and long-term environmental threats in Peru. Second Presbyterian has also been in a community garden partnership with a local school as part of its commitment to the environment. Gifts to One Great Hour of Sharing has made these partnerships possible.

Pastor Trinidad Martinez Solis is with members of Fayetteville, North Carolina's Misión Presbiteriana Hispana in traditional costumes from various nations. (Photo courtesy of Misión Presbiteriana Hispana)



31

ORGANIZATIONAL CHART

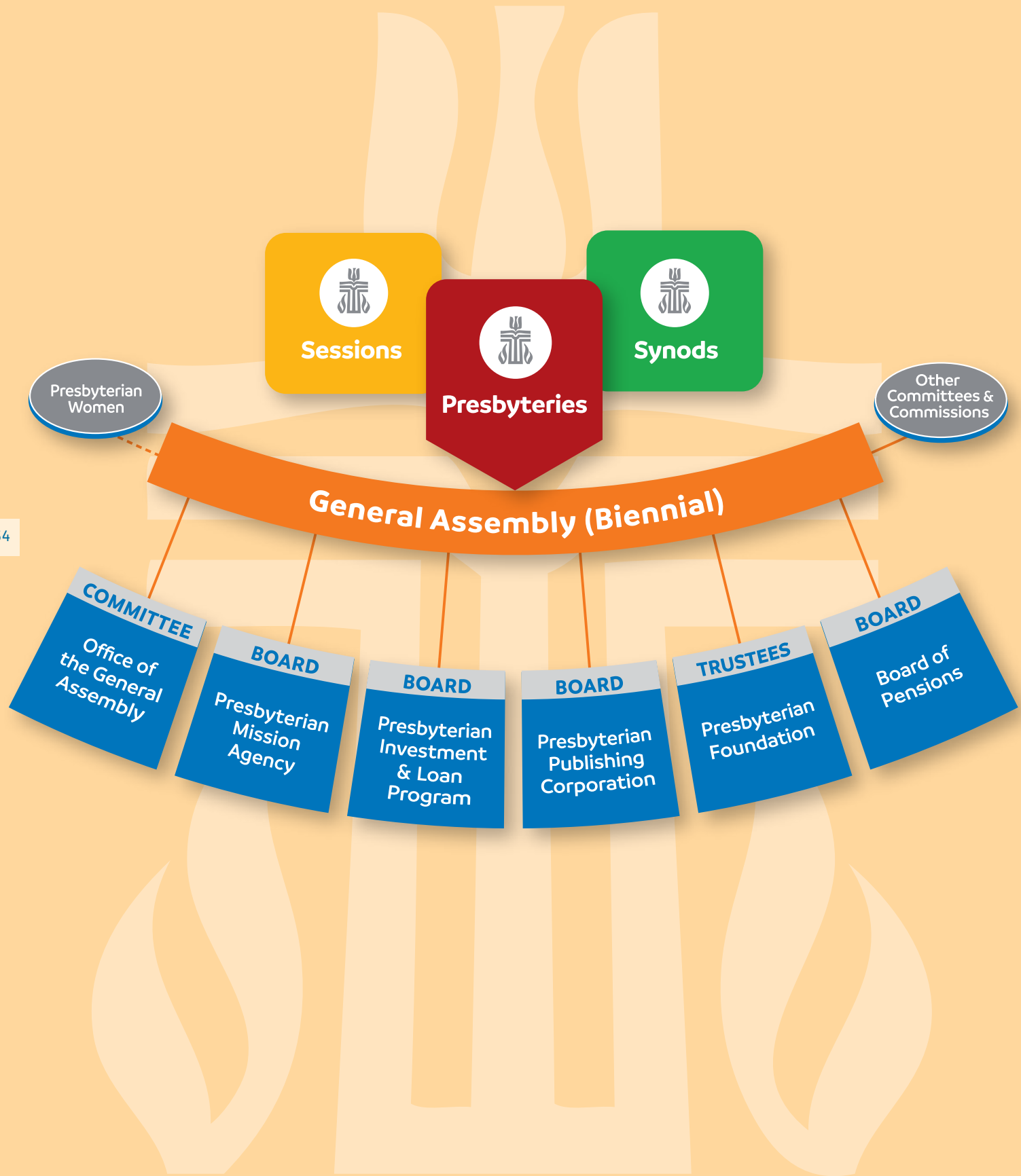


BOARD MEMBERS (as of April 2018)

(c) Chair
(cc) Co-Chair
(vc) Vice Chair

Kenneth Godshall <i>Chair</i> Marsha Zell Anson <i>Vice Chair</i>	James Parks Heath Rada David Shinn Shannan Vance-Ocampo Tamara Williams Carol Winkler Nicholas Yoda	John Hinkle (at large) Robert James Jeffrey Joe Wilson Kennedy Warren Lesane Charles L. Low Alice Ridgill Conrad Rocha (vc) Melinda Sanders Raul Santiago-Rivera (at large) Carol Winkler Susan Wonderland	Wilson Kennedy <i>Committee on the Office of the General Assembly (COGA)</i> Marc Lewis <i>Presbyterian Publishing Corporation</i> Thomas Priest Jr. <i>Advocacy Committee for Racial Ethnic Concerns (ACREC)</i> J. Herbert Nelson, II <i>Stated Clerk of the General Assembly</i> James Rissler <i>Presbyterian Investment and Loan Program Inc.</i> Linda Scholl <i>Presbyterian Investment and Loan Program Inc.</i> Frank Spencer <i>Board of Pensions of the Presbyterian Church (U.S.A.)</i> Thomas Taylor <i>Presbyterian Church (U.S.A.) Foundation</i> Floretta Watkins <i>Advocacy Committee for Women's Concerns (ACWC)</i>
COORDINATING COMMITTEE Marsha Zell Anson (vc) Mary C. Baskin David Crittenden Thomas Fleming Jr. Kenneth Godshall (c) Sinthia Hernandez-Diaz Joseph Morrow Conrad Rocha Melinda Sanders David Shinn	PROPERTY/LEGAL Jason Chavez Cecil Corbett James Fouthier Jr. Vicki Garber Marcella Glass Chad Herring Charles L. Low Rafael Medina Conrad Rocha Melinda Sanders (c) Patsy Smith Wendy Tajima Brenton Thompson Floretta Watkins	OUTREACH TO THE WORLD Beverly Brewster Arnolfo Bringas Gregory Chan Cecil Corbett James Fouthier Jr. Vicki Garber Marcella Glass Kathy Maurer Rafael Medina Regina Meester Joseph Morrow (c) James Parks Kathy Terpstra Shannan Vance-Ocampo	EX OFFICIO Jan Edmiston <i>Co-Moderator, 222nd General Assembly (2016)</i> Robert James <i>Presbyterian Men</i> Carol Winkler <i>Presbyterian Women</i> Heath Rada <i>Moderator of the 221st General Assembly (2014)</i>
AUDIT COMMITTEE Stephanie Anthony (COGA Rep.) Steve Asher (at large) Mary C. Baskin Beverly Brewster Ellen Pearre Cason (at large) James Ephraim Thomas Fleming Jr. (c) Sinthia Hernandez-Diaz (vc) Robert James Jeffrey Joe Wilson Kennedy Warren Lesane Kathy Maurer Joseph Morrow Nancy Ramsay Alice Ridgill Kathy Terpstra Susan Wonderland	NURTURE THE BODY Marsha Zell Anson Jason Chavez Lindsay Harren-Lewis Heath Rada Nancy Ramsay David Shinn (c) Patsy Smith Wendy Tajima Brenton Thompson Floretta Watkins Tamara Williams Nicholas Yoda	CORRESPONDING MEMBERS Beverly Brewster <i>Advisory Committee on Social Witness Policy (ACSWP)</i> David Crittenden <i>Presbyterian Mission Agency, Acting Executive Director</i> John Hamm <i>Board of Pensions of the Presbyterian Church (U.S.A.)</i> Jesse Hite <i>Presbyterian Publishing Corporation</i> Stephen Kelly <i>Presbyterian Church (U.S.A.) Foundation</i>	<i>With gratitude for their service and ministry, we acknowledge the following board members who also served in 2017:</i> Marvin Brangan Tony De La Rosa Buddy Monahan Susan Osoinach
PERSONNEL & NOMINATING Marsha Zell Anson (c) Mark Brainerd (vc) Arnolfo Bringas James Ephraim Gregory Chan Lindsay Harren-Lewis Regina Meester	RESOURCE ALLOCATION & STEWARDSHIP Mary C. Baskin (c) Mark Brainerd James Ephraim Thomas Fleming Jr. Sinthia Hernandez-Diaz Chad Herring		

ORGANIZATIONAL CHART



AGENCIES OF THE GENERAL ASSEMBLY

BOARD OF PENSIONS

pensions.org

The Board of Pensions supports a ministry of wholeness, promoting spiritual, health, financial and vocational well-being as it lives into the direction given by General Assembly. It serves PC(USA) employers and affiliated employers and about 61,000 individuals, including church workers, retired church workers and family members. The Board administers retirement, health care and death and disability benefits, and provides educational programs and financial assistance. As of Dec. 31, 2017, the agency was managing investments of nearly \$10 billion. In 2017, the Pension Plan collected \$61 million in dues and paid out \$368 million in benefits. The health care programs paid \$194 million in benefits and collected \$212 million in dues/contributions. More than 1,200 assistance grants, totaling \$5 million, were awarded.

OFFICE OF THE GENERAL ASSEMBLY

oga.pcusa.org

Empowered by the Holy Spirit, the Office of the General Assembly encourages the Presbyterian Church (U.S.A.) to be a people of hope — seeking together the mind of Christ, working for justice and mercy in the world and participating in God’s continual reformation of the church. Under the leadership of the Stated Clerk, OGA serves as the denomination’s ecclesiastical arm, offering support for the church’s governance and structure. It carries out its mission through three primary ministry areas: Churchwide Ministries, Ecclesial and Ecumenical Ministries, and Mid Council Ministries.

PRESBYTERIAN FOUNDATION

presbyterianfoundation.org

The Presbyterian Foundation was established in 1799 to gather, steward and distribute funds for mission. The Foundation is committed to strengthening congregations, mid councils and other church entities by helping them develop gifts, managing funds on their behalf, and working with them to build communities of generosity. The Foundation provides all Presbyterians an avenue to realize their philanthropic goals through a variety of giving options and maintains a strong focus on the Reformed values that guide our stewardship and investment. The Foundation raised more than \$72 million in new gifts and investments in 2017. Through the generosity of faithful Presbyterians, more than \$300 million has been made available over the past five years for the work and mission of the church.

PRESBYTERIAN

INVESTMENT & LOAN PROGRAM

pilp.pcusa.org

The Presbyterian Investment & Loan program provides low-cost loans to congregations and church entities for the construction or purchase of buildings, renovations and refinancing of existing debt. The program raises funds for lending by selling interest-bearing term notes to Presbyterian individuals and entities interested in using a portion of their savings and investments to help build churches and expand ministries.

PRESBYTERIAN MISSION AGENCY

presbyterianmission.org

The Presbyterian Mission Agency is the mission and ministry arm of the Presbyterian Church (U.S.A.). Guided by the Spirit, the Presbyterian Mission inspires, equips and connects the PC(USA) and its many expressions to serve Christ in the world through new and existing communities of faith, hope, love and witness. In very real and practical ways, the Presbyterian Mission Agency lives into its vision of joyfully engaging in God’s mission for the transformation of the world through the work of the agency’s four ministry areas: Compassion, Peace & Justice; Racial Ethnic & Women’s Ministries; Theology, Formation & Evangelism; and World Mission.

PRESBYTERIAN

PUBLISHING CORPORATION

ppcbooks.com

Building on the Reformed tradition, the Presbyterian Publishing Corporation seeks to glorify God by contributing to the spiritual and intellectual vitality of Christ’s church. The Presbyterian Publishing Corporation publishes resources that advance religious scholarship, stimulate conversation about moral values, and inspire faithful living. PPC publishes primarily as Westminster John Knox Press and sells books online to Presbyterians and a broader ecumenical audience through thethoughtfulchristian.com and pcusastore.com. Through its Geneva Press imprint, PPC is the publisher of PC(USA) curriculum. PPC is also the publisher of *Glory to God*, the denominational hymnal. PPC releases approximately 60 new titles each year and has a backlist of more than 2,000 titles.



In 2017, about \$81 million was generated for mission and ministry under the stewardship of the Presbyterian Mission Agency.

Over the past decade, both restricted and unrestricted receipts have continued a downward trend. In response to these trends, the Presbyterian Mission Agency has reduced or reconfigured staff and programs to closely match expenses with available revenue and is undertaking increased funds-development efforts.

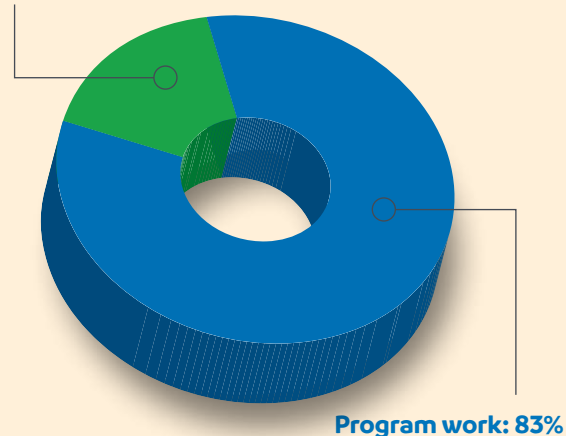
The charts and graphs on the pages that follow provide greater detail about the sources and uses of funds for each ministry area. This information is provided as part of our commitment to be accountable, transparent and responsible stewards of the funds entrusted to us for mission and ministry.

THE STEWARDSHIP OF MISSION AND PER CAPITA FUNDS

According to the audited 2017 financial statements of the Presbyterian Church (U.S.A.), A Corporation (which comprised both the Presbyterian Mission Agency and the Office of the General Assembly), the combined operating expenses by functional classification for 2017 are as follows:

■ Program expenses	83%
■ Management & general expenses	11%
■ Fundraising expenses	6%
Total	100%

Management, general and fundraising: 17%



Independent Auditor's Opinion

The full set of audited financial statements and notes is available at pcusa.org/financials. MCM CPAs & Advisors LLP has expressed an unqualified opinion on the consolidated financial statements of the Presbyterian Church (U.S.A.), A Corporation, as of Dec. 31, 2017, and for the year then ended.



COMPASSION, PEACE & JUSTICE

(\$ Thousands)

▼ Uses of Funds	Sources of Funds ►	Unrestricted	Restricted	Per Capita	Total
Compassion Ministries			7,465		7,465
Peace Ministries		596	491		1,087
Justice Ministries		273	1,859		2,132
Administrative & Common Expenses		488	2,660		3,148
Total		1,358	12,476		13,834

RACIAL ETHNIC & WOMEN'S MINISTRIES

(\$ Thousands)

▼ Uses of Funds	Sources of Funds ►	Unrestricted	Restricted	Per Capita	Total
Racial Ethnic & New Immigrant Ministries		706	649		1,356
Racial Ethnic Leadership			3,610		3,610
Women's Leadership Development & Justice Ministries		120	75		195
Administrative & Common Expenses		732	1,037		1,769
Total		1,558	5,372		6,930

THEOLOGY, FORMATION & EVANGELISM

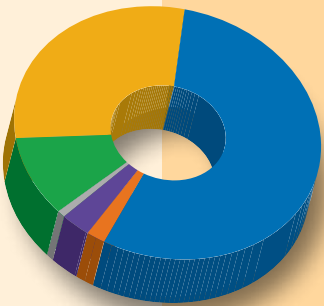
(\$ Thousands)

▼ Uses of Funds	Sources of Funds ►	Unrestricted	Restricted	Per Capita	Total
Theology & Worship		323	1,833		2,156
Theological Education		105	10		115
Congregational Ministries Publishing		293	1,130		1,423
Interfaith Relations		28	54		82
Evangelism Ministries		431	428		859
Church Growth Ministries		119	943		1,062
Administrative & Common Expenses		1,605	1,404		3,009
Total		2,904	5,802		8,706

Due to rounding, numbers throughout this report may not add up precisely to the totals shown.

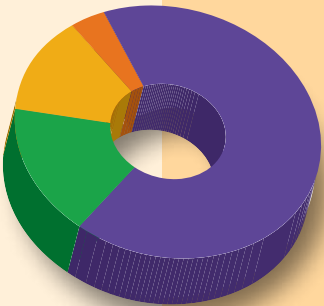
SOURCES OF FUNDS

COMPASSION, PEACE & JUSTICE



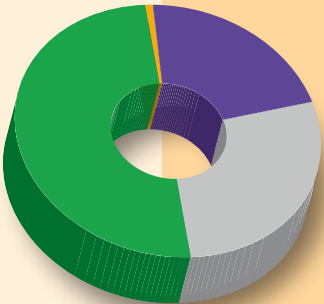
Churchwide Special Offerings	30%
Other Specific Appeals	56%
Additional Forms of Giving	2%
Interest & Dividends	3%
Events, Services & Sales	1%
Unrestricted	10%
	100%

RACIAL ETHNIC & WOMEN'S MINISTRIES



Churchwide Special Offerings	13%
Other Specific Appeals	0%
Additional Forms of Giving	4%
Interest & Dividends	64%
Unrestricted	19%
	100%

THEOLOGY, FORMATION & EVANGELISM



Churchwide Special Offerings	1%
Interest & Dividends	21%
Events, Services & Sales	28%
Unrestricted	50%
	100%

WORLD MISSION

(\$ Thousands)

▼ Uses of Funds	Sources of Funds ►	Unrestricted	Restricted	Per Capita	Total
Mission Personnel			7,970		7,970
Mission Partners & Programs		417	3,116		3,534
Global Discipleship		605	645		1,250
Administrative & Common Expenses		3,587	2,559		6,147
Total		4,610	14,291		18,900

COMMUNICATIONS

(\$ Thousands)

▼ Uses of Funds	Sources of Funds ►	Unrestricted	Restricted	Per Capita	Total
Communications		915	2,003	57	2,975
Administrative & Common Expenses		(690)	(1,009)		(1,699)
Total		225	994	57	1,276

MISSION ENGAGEMENT & SUPPORT

(\$ Thousands)

▼ Uses of Funds	Sources of Funds ►	Unrestricted	Restricted	Per Capita	Total
Mission Engagement & Support		1,854	2,358	306	4,518
Administrative & Common Expenses		(1,854)	(2,358)		(4,212)
Total		0	0	306	306

SHARED SERVICES

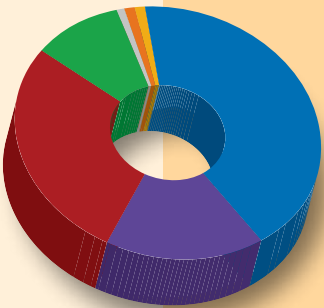
(\$ Thousands)

▼ Uses of Funds	Sources of Funds ►	Unrestricted	Restricted	Per Capita	Total
Finance & Accounting		460	1,420	731	2,611
Information Technology		796	824	27	1,646
Presbyterian Distribution Service		276	782	242	1,299
Mail & Print Services and Building Services		541	1,129	95	1,765
Administrative & Common Expenses		(2,072)	(2,389)		(4,461)
Total		0	1,765	1,095	2,860

Due to rounding, numbers throughout this report may not add up precisely to the totals shown.

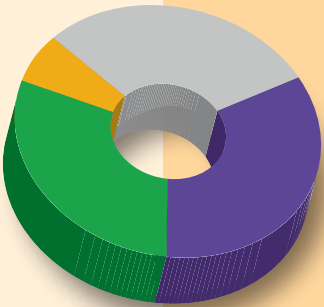
SOURCES OF FUNDS

WORLD MISSION



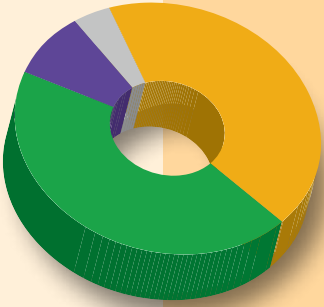
Churchwide Special Offerings	1%
Other Specific Appeals	42%
Additional Forms of Giving	1%
Directed Mission Support	17%
Interest & Dividends	28%
Events, Services & Sales	1%
Unrestricted	10%
	100%

COMMUNICATIONS



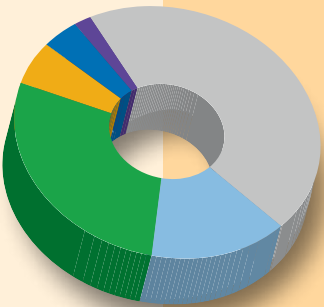
Churchwide Special Offerings	7%
Events, Services & Sales	29%
Interest & Dividends	33%
Unrestricted	31%
	100%

MISSION ENGAGEMENT & SUPPORT



Churchwide Special Offerings	43%
Additional Forms of Giving	0
Interest & Dividends	9%
Events, Services & Sales	4%
Unrestricted	44%
	100%

SHARED SERVICES



Churchwide Special Offerings	6%
Interest & Dividends	2%
Other	4%
Events, Services & Sales	45%
Per Capita	15%
Unrestricted	28%
	100%

EXECUTIVE DIRECTOR’S OFFICE

(\$ Thousands)

▼ Uses of Funds	Sources of Funds ►	Unrestricted	Restricted	Per Capita	Total
Advocacy Committee Support		132		32	164
Executive Director’s Office		61	289	596	946
Presbyterian Mission Agency Board Meetings				182	182
General Assembly & Presbyterian Mission Agency-Related				73	73
General Counsel		406	1,230	460	2,095
Mid Council Relations				130	130
Common Expenses		(142)	(125)		(268)
Total		457	1,393	1,474	3,324

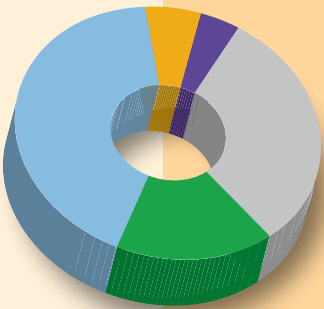
OTHER

(\$ Thousands)

▼ Uses of Funds	Sources of Funds ►	Unrestricted	Restricted	Per Capita	Total
Shared Expenses		1,429	410	210	2,049
Insurance		170	1,472		1,642
Restricted Fund Allocation			56		56
Investment Management Fees		120	99	40	260
Board of Pensions			1,129		1,129
National Mission Partnership Funds			594		594
Administrative & Common Expenses		(491)	(529)		(1,020)
Total		1,229	3,232	251	4,712

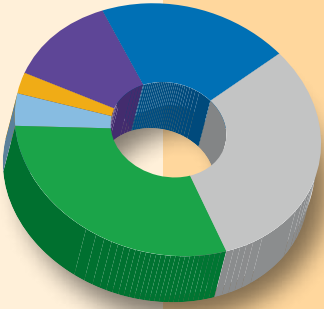
Due to rounding, numbers throughout this report may not add up precisely to the totals shown.

SOURCES OF FUNDS



EXECUTIVE DIRECTOR’S OFFICE

Churchwide Special Offerings	6%
Interest & Dividends	4%
Events, Services & Sales	31%
Unrestricted	17%
Per Capita	42%
<hr/>	
100%	



OTHER

Churchwide Special Offerings	3%
Interest & Dividends	12%
Other	20%
Events, Services & Sales	31%
Unrestricted	30%
Per Capita	4%
<hr/>	
100%	

2017 ACTUAL SOURCES OF FUNDS

(\$ Thousands)

	Unrestricted	Restricted	Per Capita	Total
BASIC MISSION SUPPORT	5,179	3,895		9,074
Shared Mission Support	5,179			5,179
Directed Mission Support		3,895		3,895
CHURCHWIDE SPECIAL OFFERINGS		10,708		10,708
Christmas Joy Offering		2,782		2,782
One Great Hour of Sharing Offering		5,639		5,639
Peace and Global Witness/Peacemaking Offering		706		706
Special Offering Catalogs		883		883
Pentecost Offering		699		699
Witness Offering		(1)		(1)
OTHER SPECIFIC APPEALS		22,129		22,129
Emergency and Disaster Relief		14,547		14,547
Extra Commitment Opportunities (ECO)		6,639		6,639
Special Missionary Support		607		607
Hunger		335		335
Theological Education Fund		1		1
ADDITIONAL FORMS OF GIVING	359	7,631		7,990
Presbyterian Women		368		368
Bequests and Annuities	359	7,047		7,406
Other Gifts		215		215
ENDOWMENTS AND INTEREST & DIVIDENDS	9,680	11,678		21,358
PC(USA) Endowment Funds	6,206	10,243		16,449
Presbyterian Mission Program Fund	82			82
Outside Trusts	1,135			1,135
Jinishian Fund		1,320		1,320
Short-Term Investments	2,257	115		2,373

Due to rounding, numbers throughout this report may not add up precisely to the totals shown.

	Unrestricted	Restricted	Per Capita	Total
EVENTS, SERVICES & SALES	54	9,725		9,779
Hubbard Press	50	51		101
Sales: Curriculum		1,029		1,029
Sales: Program Services		3,896		3,896
Sales: Resources	4	1,174		1,177
Sales: Church Loans		3,573		3,573
Other Income		3		3
TOTAL RECEIPTS	15,272	65,766		81,038
Future Reserves	(2,932)	(20,441)		(23,373)
2017 PER CAPITA			3,183	
TOTAL SOURCES OF FUNDING	12,340	45,325	3,183	60,848

2017 ACTUAL EXPENDITURES BY ENTITY

(\$ Thousands)

	Unrestricted	Restricted	Per Capita	Total
EXECUTIVE DIRECTOR'S OFFICE	457	1,393	1,474	3,324
COMMUNICATIONS	225	994	57	1,276
MISSION ENGAGEMENT & SUPPORT	0	0	306	306
MISSION	10,429	37,941	0	48,370
Compassion, Peace & Justice	1,358	12,476		13,834
Racial Ethnic & Women's Ministries	1,558	5,372		6,930
Theology, Formation & Evangelism	2,904	5,802		8,706
World Mission	4,610	14,291		18,900
SHARED SERVICES	0	1,765	1,095	2,860
OTHER	1,229	3,232	251	4,712
TOTAL EXPENDITURES	12,340	45,325	3,183	60,848



FUNDING PRESBYTERIAN MISSION

Mission funding comes from many sources. Gifts that support the church’s work fund general and specific mission.

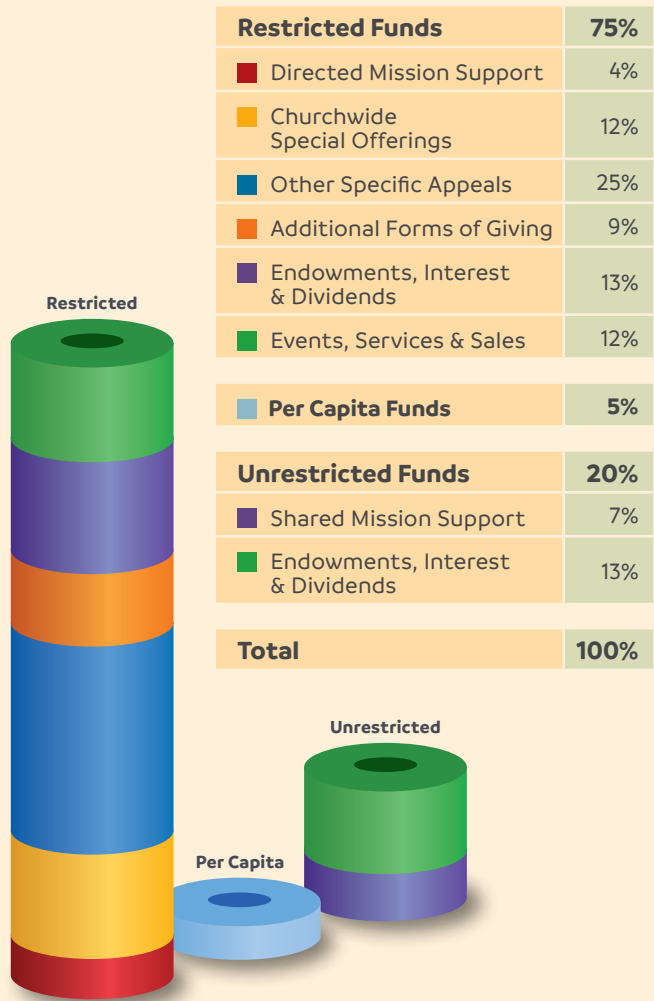
Unrestricted Funds — about 20 percent of our funding — demonstrate our connection as Presbyterians and provide resources for the church to be a collective witness to Christ. Sources of unrestricted funds include Shared Mission Support, endowments, interest and dividends, and bequests and annuities.

Restricted Funds — about 75 percent of our funding — celebrate the particular commitments to mission made by members and congregations as

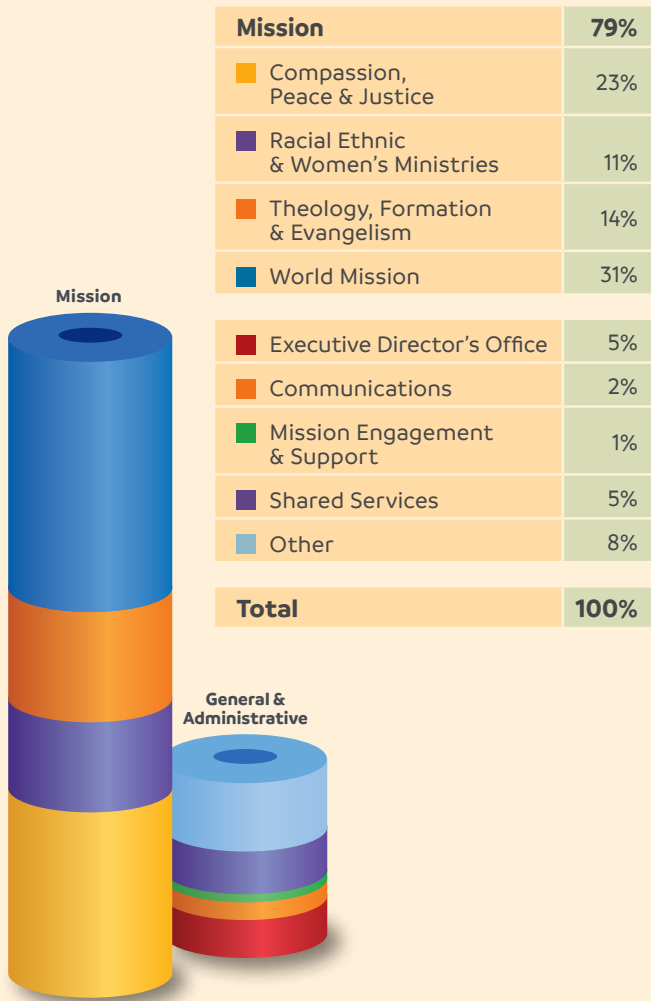
God calls them. Sources of restricted funds include Direct Mission Support, churchwide special offerings, other specific appeals (such as those for Presbyterian Disaster Assistance and extra commitment opportunities), endowments, bequests and sales of resources and services.

Per Capita Funds — about 5 percent of the Presbyterian Mission Agency’s budget — are used for Presbyterian Mission Agency Board meetings, the executive director’s office and other Presbyterian Mission Agency coordination; the office of Mid Council Relations (which is shared with the Office of the General Assembly); and advocacy and advisory committees.

HOW PRESBYTERIAN MISSION IS FUNDED



HOW YOUR FUNDS ARE USED



Due to rounding, numbers throughout this report may not add up precisely to the totals shown.



A young woman sits in a tuk-tuk on the property of a tea plantation in Sri Lanka. (Photo by Kathy Melvin)



Presbyterian Church (U.S.A.)
Presbyterian Mission

100 Witherspoon Street | Louisville, KY 40202
presbyterianmission.org



facebook.com/pcusa
twitter.com/presbyterian
youtube.com/presbyterianchurch

*To request additional copies of this annual report,
contact Debbie Gardiner at 800-728-7228, ext. 5988
or debbie.gardiner@pcusa.org.*